

**GREEN PAINT SYSTEM**  
*Reduce, reuse, recycle*

## GREEN PAINT SYSTEM

The renewed painting system uses an ultra-thin PET liner. Using recycled Polyethylene terephthalate (PET) puts us a green step ahead as a company. Even more so because we use an incredible 40-50% less plastic to produce our flexible inner cups compared to the average liner by our competitors on the market. Looking at a European market of a tremendous 150 million produced systems, this is a significant amount of saved plastic.

Did you know that PET ensures minimal friction with the paint, more chemical resistant than LDPE and collapses a lot faster than LDPE? In this way, the unique PET liner does not only leave less paint residue in the liner and reduces the weight of plastic waste but on top of that ensures you at all times in a perfect color match.

**GPS 650125 - 650190**



▶ WATCH VIDEO



### Closing cap

- Store leftover paint easily
- Available separately: Closing caps for Green Paint System - 3x20p./box

**GPS 00**

### Lid

- Lightweight lid with integrated strainer
- 125µm or 190 µm

### PET-liner

- Ultra thin PET-liner
- Up to 50% thinner compared to traditional systems
- Highly transparent for accurate mixing
- Less friction resulting in better paint flow
- Easier and faster collapsing than LDPE and therefore faster paint release out of the liner

### Reusable outer cup

- 10 different mixing ratios
- Optimized height-width dimensions for more accurate measuring
- Available separately: Outer cup 650ml for GPS system - 5p./box

**GPS 650C**

# WHAT'S INSIDE THE BOX

GPS 650125 - 650190



- **50 LIDS**  
125µm or 190µm



- **50 PET-LINERS**  
Ultra thin



- **1 OUTER CUP**  
Printed & reusable



- **20 CLOSING CAPS**  
Store leftover paint easily



Thinking outside the box won't cut it anymore. That's why we're thinking about **our boxes** as well. Not only are they **made from sustainable cardboard** that can be recycled up to 26 times, but our **water-based ink printing process** means no harmful chemicals are used.



**Available separately:**

- Wall mount for dispenser box

**WMG 00**

# ASSEMBLE YOUR SPRAY GUN IN 4 EASY STEPS

1



## STEP 1

- Place the flexible liner in the firm, printed outer cup
- Measure and mix your paint into the cup system
- Press and twist the lid onto the outer cup, sealing the liner between the outer cup and the lid

2



## STEP 2

- Select and install the proper adaptor fitting your gun
- Push the spray gun with adaptor onto the system and secure it by a quarter twist
- Connect the air hose to the spray gun

3



## STEP 3

- Turn the spray gun upside down
- Hold the trigger to release remaining air until paint comes out

4



## STEP 4

- Turn the system upright
- Regulate your air pressure and you are ready to spray



WATCH  
3D VIDEO

## STORE

- Press the closing cap on the lid and turn upside down

## DISPOSE

- Dispose when completely empty (according to local regulations)



# UP TO 50% LESS PLASTIC IN 5 STEPS!

1

## MATERIALS

The new paint system consists of 3 basic raw materials: recycled PET, recycled PP (polypropylene) and virgin PP (polypropylene).

2

## PRODUCTION PROCESS

The recycled PET is transformed into the PET-liner. During this process, there is a lot of surplus which we reuse to produce more PET-liners without waste. 30% of the plastic remains after punching the Pet-liner and this 30% will be fully recycled again.

In addition, two types of polypropylene are used. The recycled version is used to make our lids and the non-recycled version is used to make the solid outer container.

3

## PRODUCT

These three components make up our 'Green Paint System'. Recycled raw materials, re-usable materials and recyclable end treatment make this system ecological and innovative, putting us several steps ahead of our competitors.

5

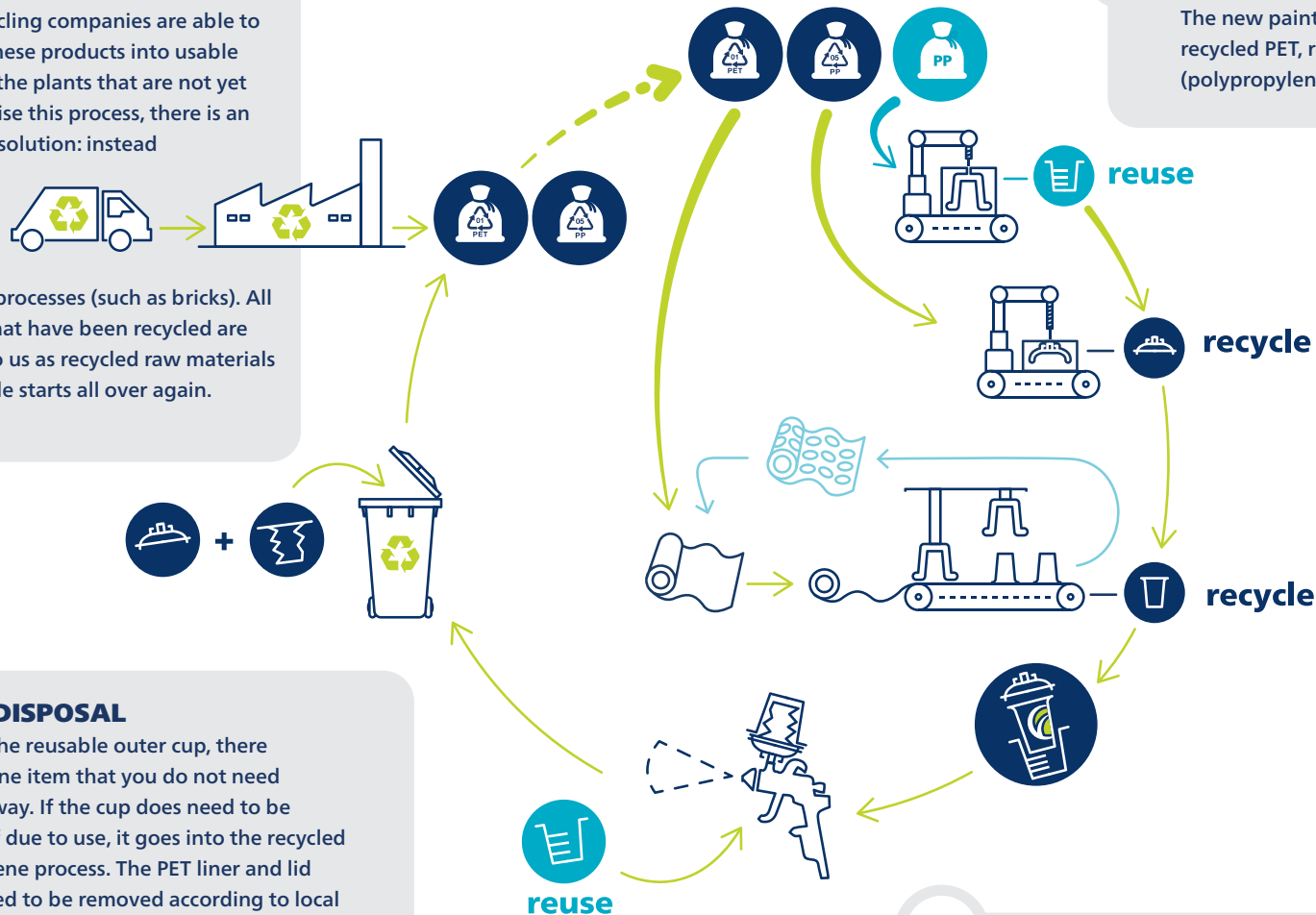
## RECYCLE & REPEAT

Not all recycling companies are able to reprocess these products into usable plastic. For the plants that are not yet able to realise this process, there is an alternative solution: instead of burning the waste, they use it as fuel for baking processes (such as bricks). All materials that have been recycled are delivered to us as recycled raw materials and the cycle starts all over again.

4

## WASTE DISPOSAL

Thanks to the reusable outer cup, there is already one item that you do not need to throw away. If the cup does need to be disposed of due to use, it goes into the recycled polypropylene process. The PET liner and lid are supposed to be removed according to local regulations.



# SPECIFICATIONS

<b>GPS 650190</b>	White lid	190 µm (for solventbased paints)
<b>GPS 650125</b>	Green lid	125 µm (for waterbasedbased paints)



**GPS 650125**

**GPS 650190**

## GREEN PAINT SYSTEM 125µm

**GPS 650125**

## GREEN PAINT SYSTEM 190µm

**GPS 650190**

# FITTING ADAPTORS

<b>GPS 01</b>	GPS adaptor M16 x 1,5 internal thread
<b>GPS 02</b>	GPS adaptor M16 x 1,5 external thread
<b>GPS 03</b>	GPS adaptor 3/8 internal thread
<b>GPS 04</b>	GPS adaptor 3/8 external thread
<b>GPS 05</b>	GPS adaptor QCC for SATA
<b>GPS 06</b>	GPS adaptor MINI 1/4 external thread
<b>GPS 07</b>	GPS adaptor M14x1 internal thread
<b>GPS 08</b>	GPS adaptor QCC for SATA mini-jet



**GPS 01**



**GPS 02**



**GPS 03**



**GPS 04**



**GPS 05**



**GPS 06**



**GPS 07**



**GPS 08**

## GPS ADAPTOR M16 X 1,5 INTERNAL THREAD

**GPS 01**

## GPS ADAPTOR M16 X 1,5 EXTERNAL THREAD

**GPS 02**

## GPS ADAPTOR 3/8 INTERNAL THREAD

**GPS 03**

## GPS ADAPTOR 3/8 EXTERNAL THREAD

**GPS 04**

## GPS QUICK ADAPTOR 1/4

**GPS 05**

## GPS ADAPTOR MINI 1/4 EXTERNAL THREAD

**GPS 06**

## GPS ADAPTOR M14X1 INTERNAL THREAD

**GPS 07**

## GPS ADAPTOR QCC FOR SATA MINI-JET

**GPS 08**

LIST OF SUITABLE SPRAY GUNS ►





### THE NEXT INNOVATION

Innovation is more than just a technical improvement. Innovation is progress, the chance to do something better or do something that was previously said to be impossible.

Our new Finixa Paint system is certainly innovative in that respect. The renewed system uses an ultra-thin PET liner. Using recycled Polyethylene terephthalate (PET) puts us a green step ahead as a company. This is enhanced by the fact that we use an incredible 40-50% less plastic to produce our new flexible inner cups. That is, compared to the

average liner by our competitors on the market. Looking at a European market of a tremendous 150 million produced systems, this is a significant amount of plastic that we can prevent from being used.

The combination of the step construction inside the outer cup, which ensures that the liner is perfectly positioned and sealed, and our highly compressible liner ensures a very smooth experience during and after spraying.

Today, the car industry is still seen as a very polluting sector. Step by step, we are trying to compensate or improve this where we can. To this end, we are bringing real ecological innovations, such as our renewed paint system. Together we are building a brighter tomorrow.



For more information, contact us! | [info@finixa.com](mailto:info@finixa.com)