

SPRAY GUN AZ3 HTE2, AZ3 HTE2 AV, AZ3 HTE2 HVLP

GB Before use, adjustment or maintenance, it is important to read this instruction manual very carefully. This manual must be stored in a safe place for any future reference.



This AIR GUNSA spray guns kit complies to ATEX regulations 94/9/EC, protection level:II 2 G X Suitable for using Zones 1 and 2.

X marking: Any static electricity discharge from the spray gun is to be diverted to the ground via the conductive air hose as stipulated.

! ALWAYS observe WARNINGS and CAUTIONS in this instruction manual.

TECHNICAL SPECIFICATIONS

Max. working air pressure:	7.0 bar (100 PSI)	Air connection:	G 1/4" M
Noise Level (LAeqT):	77.6 dB (A) *	Fluid connection:	G 1/4" F
Max. Temperature range:	5 ~ 40 °C	Weight g (lbs):	517 (1.14)

* Measuring point: 1m backwards from gun, 1.6m height

Model	Nozzle Orifice Ø mm (in)	Aircap set Mark	Air pressure at gun inlet bar (PSI)	Fluid output ml/min	Air consumption ml/min (cfm)	Pattern Width mm (in)
AZ3 HTE2 / AZ3 HTE2 AV Gravity feed						
AZ3 HTE2 1.0	1.0 (0.039)	10-15 HTE	2.0 (29)	80	200 (7.06)	180 (7.08)
AZ3 HTE2 1.3	1.3 (0.051)			140	200 (7.06)	240 (9.44)
AZ3 HTE2 1.5	1.5 (0.059)			160	200 (7.06)	260 (10.23)
AZ3 HTE2 1.8	1.8 (0.070)	18-20 HTE	2.0 (29)	250	215 (7.59)	300 (11.81)
AZ3 HTE2 2.0	2.0 (0.079)			300	215 (7.59)	340 (13.38)
AZ3 HTE2 2.5	2.5 (0.098)	25 HTE	3.0 (44)	450	280 (9.89)	360 (14.17)
AZ3 HTE2 2.8	2.8 (0.110)	28-30 HTE		540	300 (10.59)	380 (14.96)
AZ3 HTE2 3.0	3.0 (0.118)	35 HTE		560	300 (10.59)	400 (15.74)
AZ3 HTE2 3.5	3.5 (0.138)			600	300 (10.59)	420 (16.53)
AZ3 HTE2 HVLP **						
AZ3 HTE2 HVLP	1.3 (0.051)	HVLP	2.0 (30)	150	340 (12.0)	280 (11.0)
AZ3 HTE2 HVLP	1.5 (0.059)			185		290 (11.4)
AZ3 HTE2 HVLP	1.8 (0.070)			215		340 (13.4)
AZ3 HTE2 HVLP	2.0 (0.079)			240		360 (14.2)

** Max gun inlet pressure 2.0bar (30psi) to achieve 10psi air cap pressure for HVLP mandated areas

SAFETY WARNING



FIRE AND EXPLOSION

- Never use the following HALOGENATED HYDROCARBON SOLVENTS:** which can cause cracks or dissolution of gun body (aluminium) due to chemical reaction. UNSUITABLE SOLVENTS: methyl chloride, dichloromethane, 1,2-dichloroethane, carbon tetrachloride, trichloroethylene, 1,1,1-trichloroethane
- Sparks and open flames are strictly prohibited.** Paints can be highly flammable and can cause fire. Do not expose to open flames, electrical goods, cigarettes etc.
- Securely ground spray gun using conductive air hose.** (Less than 1MΩ) Always ensure that the spray gun is earthed correctly.

Manufactured by: AIR GUNSA s.r.l., 46 Corso Vigevano 10155 Torino - Italy
HEADQUARTERS: ANEST IWATA Corporation
3176, Shinyoshida-cho, Kohoku-ku - Yokohama, 223-8501 JAPAN

PROTECTION OF HUMAN BODY

- Use in a well-ventilated site, using a spray booth.**
Poor ventilation can cause organic solvent poisoning and fire.
- Always wear protective gear (safety glasses, mask, gloves) to avoid inflammation of eyes and skin.**
In case of any physical discomfort, immediately seek medical advice.
- Wear earplugs if necessary.**
Noise level can exceed 85dB(A), depending on operating conditions and painting site.
- Pulling the trigger many times during operation, may cause carpal tunnel syndrome.** Always rest, in case of tiredness.

IMPROPER USE

- Never point gun towards people or animals.**
- Never exceed maximum working pressure or maximum operating Temperature**
- Always release air and fluid pressure before cleaning, disassembling or servicing** otherwise, remaining pressure can cause bodily injury due to improper operation or scattering of cleaning liquid.
- Tip of fluid needle set has a sharp point.**
Do not touch the tip during maintenance to avoid accidents.
- Never use this gun to spray foods or chemicals.**
Otherwise, foreign substance, could cause corrosion of fluid passages which could adversely affect health.

HOW TO USE

CAUTION

- Use clean air filtered through air dryer and air filter.**
 - When using this gun for the first time after purchase, adjust fluid needle packing set, spray cleaner to clean fluid passages and remove rust preventive oil.**
- Firmly connect an air hose to air nipple 1/4".
 - Firmly connect a suitable cup to fluid nipple.
 - Flush fluid passages with a compatible solvent.
 - Pour paint into container, test spray, adjust fluid output and pattern width.

HOW TO OPERATE

Suggested atomizing air pressure is 2.0 to 3.0 bar (29 to 44 PSI) at gun inlet.

Recommended paint viscosity differs according to paint property and painting conditions. 12 to 23 sec. / Ford cup#4 is recommended.

Set the spray distance from the gun to the work piece, as near as possible within the range of 100-200 mm (3.9-7.9 in).

MAINTENANCE & INSPECTION

CAUTION



- Make sure you do not damage tip of fluid nozzle or seat section.
- Never use spare parts that are not Air Gunsa originals.

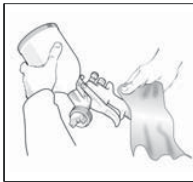
1. Pour remaining paint into another container. Clean fluid passages and air cap set. Place a small amount of cleaner into the cup and flush out the fluid passages. **NOTE: DISCONNECT ATOMIZING AIR DO NOT ATOMIZE CLEANING SOLUTION.**

- INCOMPLETE CLEANING CAN CAUSE PATTERN SHAPE DEFECTS. ESPECIALLY CLEAN FULLY AND PROMPTLY AFTER USE WITH TWO-COMPONENT PAINT.



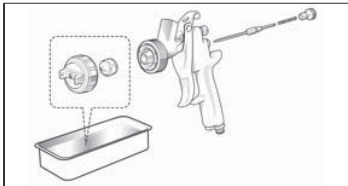
2. Clean each section with brush soaked with cleaner and wipe out with waste cloth.

- NEVER IMMERSE THE SPRAY GUN COMPLETELY IN SOLVENT, AS IT CAN DAMAGE PARTS.



3. Before disassembly, clean fluid passages.

- Disassemble fluid nozzle, while keeping fluid needle pulled (triggering) in order to protect its seat section.
- Disassemble fluid needle set, **(only when strictly necessary)**
- Remove the fluid adj. knob and needle spring, extracting the spring and fluid needle set, from the back of fluid adj. guide set still assembled on the gun body.



Leakage from fluid nozzle set and fluid needle set seat sections. **Replace fluid nozzle set and fluid needle set, if leakage does not stop after cleaning them.** If you replace fluid nozzle or fluid needle only, match them carefully and make sure there is no further leakage.

TROUBLESHOOTING

GUN DOES NOT SPRAY



- | | |
|----------------------------------|-------------------|
| - Fluid adj. knob closed. | Check and adjust. |
| - Tip hole of nozzle obstructed. | Check and clean. |
| - Paint filter obstructed. | Check and clean. |
| - Non drip obstructed. | Check and clean. |

INTERMITTENT SPRAY PATTERN



- | | |
|--|---------------------------------------|
| - Air escapes from fluid nozzle. | Check , clean & replace if necessary. |
| - Air escapes from fluid needle packing. | Tighten. |
| - Air escapes from cup joint or fluid hose joint . | Tighten. |
| - Dirt inside air cap. | Clean. |

DEFECTIVE SPRAY PATTERN



- | | |
|--|---|
| - Dirty nozzle or air cap. | Clean carefully. |
| - Nozzle or air cap has been damaged. | Replace if damaged. |
| - Fluid nozzle is loose | Tighten. |
| - Paint viscosity too high or too low. | Dilute paint or increase viscosity |
| - Fluid output too high or too low. | Adjust fluid adj. knob to reduce or increase. |

LEAKING



- | | |
|---|--------------------------------|
| - Fluid nozzle seat or needle set dirty, damaged or worn. | Clean or replace if necessary. |
| - Loose fluid needle adj. knob. | Adjust. |
| - Fluid needle spring is worn. | Replace. |
| - Loose fluid nozzle. | Tighten. |
| - Needle packing set loose, too tight, dirty or worn. | Adjust, clean or replace. |

AIR ESCAPES FROM AIR CAP

- | | |
|---|--------------------------------|
| - Air valve, air valve seat or air valve spring dirty or damaged. | Clean or replace if necessary. |
|---|--------------------------------|

Air-Gunsa
ARIST IWATA Group

DECLARATION OF CONFORMITY



We AIR GUNSA s.r.l. - Corso Vigevano, 46 - 10155 Torino - Italy declare, under our sole responsibility, that the product:

AZ3 HTE2 SPRAY GUN series

to which this declaration relates, is in conformity with European ATEX Directive 94/9/CE for use in zone 1 and zone 2 and Machinery Directive 98/37/CE. According with the following international requirements: EN 1127-1, EN 292-2 and EN 1953.

Name and position of issuer: Mr. Marco G. VICENTINI, Managing Director

Firma:

data: 04/04/2008

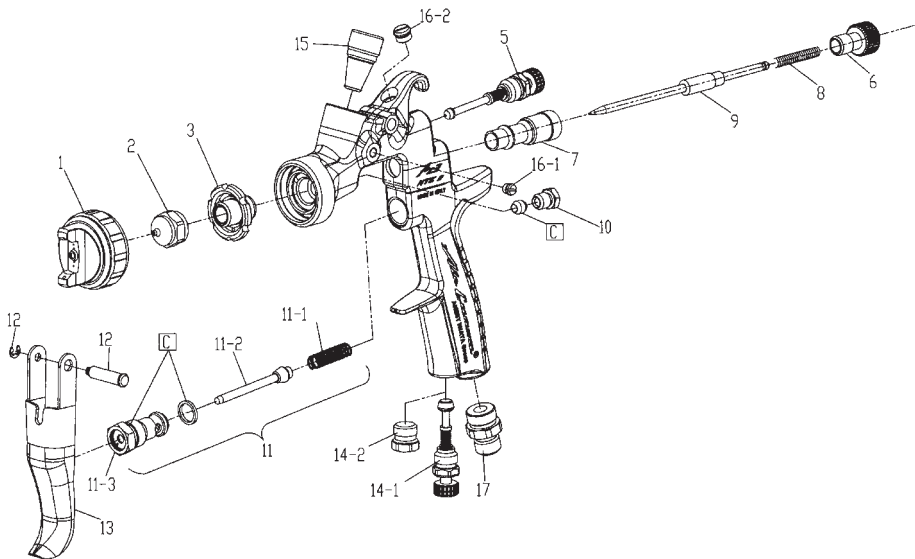
This is an original CE declaration of conformity issued by AIR GUNSA s.r.l.
Other copies are considered not valid

SPARE PARTS LIST



DESCRIPTION

Air cap	Ref. 1	Air valve shaft	Ref. 11-2
Fluid Nozzle	Ref. 2	Air valve seat	Ref. 11-3
Nozzle holder	Ref. 3	Trigger stud	Ref. 12
Pattern adjustment set	Ref. 5	Trigger	Ref. 13
Fluid needle adjustment knob	Ref. 6	Air flow control valve (AZ3HTE2 AV)	Ref. 14-1
Needle guide	Ref. 7	Plug	Ref. 14-2
Needle spring	Ref. 8	Threaded bushing	Ref. 15
Fluid needle	Ref. 9	Screw	Ref. 16-1
Needle packing nut	Ref. 10	Plug	Ref. 16-2
Air valve set	Ref. 11	Air nipple	Ref. 17
Air valve spring	Ref. 11-1		



Contacts:

ANEST IWATA Europe S.r.l.
46, Corso Vigevano 10155, Torino • ITALY
Direct Tel. +39 011 - 22 74 402
Fax +39 011 - 22 74 406
info@anest-iwataeu.com
www.anest-iwataeu.com



ANEST IWATA USA, Inc.
9920 Windisch Road,
West Chester, OH 45069
Tel: +1 513.755.3100
Toll Free: 800.440.0282
inquiry@anestiwata.com

• USA
Fax: +1 513.755.0888

www.anestiwata.com

ANEST IWATA ITALIA S.r.l.
46, Corso Vigevano 10155, Torino • ITALY
Tel. diretto +39 011 - 24 80 868 Fax: +39 011 - 85 19 44
info@anest-iwata.it www.anest-iwata.it

Cormack ANEST IWATA
Unit 3, 10 Boden Road,
SEVEN HILLS NSW 2147
Tel: +61 2 9853 2000
Fax: +61 2 9853 2090

• AUSTRALIA

info@anest-iwata.com.au www.anest-iwata.com.au

ANEST IWATA Iberica
Calle de Les Teixidores, 3-5
08918 - Badalona (Barcelona) • SPAIN
Tel.: +34 933 20 59 93 Fax.: +34 933 20 59 65
info@anest-iwata.es www.anest-iwata.es

ANEST IWATA Europe S.r.l.
NIEDERLASSUNG DEUTSCHLAND
Dorfäckerstr. 23/1, 74248 Eilhofen • GERMANY
Telefon: +49 (0) 7134- 917368 Fax: +49 (0) 7134 - 917378
Handy: +49 (0) 172 - 62 74 542
info@anest-iwata.de www.anest-iwata.de

ANEST IWATA Scandinavia
Ögärdesvägen 6C, 433 30 PARTILLE • SWEDEN
Tel. +46 (0)31 - 340 28 60 Fax +46 (0)31 - 340 28 69
info@anest-iwata.se www.anest-iwata.se

ANEST IWATA France
25 rue de Madrid
38070 St Quentin Fallavier • FRANCE
Tél. +33 (0)4 - 74 94 59 69 Fax +33 (0)4 - 74 94 34 39
info@anest-iwata.fr www.anest-iwata.fr

ANEST IWATA U.K.
Unit 10 Little End Road - Eaton Socon
St. Neots - CAMBRIDGESHIRE • U.K.
PE19 8JH
Tel.: +44 (0) 1480 405419 Fax: +44 (0) 1480 217610
enquiries@anest-iwata.co.uk www.anest-iwata.co.uk

Model	AZ2 HTE2
Test	Transfer Efficiency according to EN 13966-1
Authority	IPA Fraunhofer Institut
Date	28/03/2008

Transfer efficiencies achieved with the materials detailed in the test report were:

THREE COAT SYSTEM

PRIMER	87 %
BASECOAT	83 %
CLEARCOAT	74 %



Certification available on www.airgunsa.com

Air-Gunsa
ANEST IWATA Group

Quality Air Spray Guns Since 1944
www.anest-iwataeu.com/airgunsa

Air Gunsa S.r.l.
46, Corso Vigevano 10155 Torino • ITALY
Tel. +39 011 - 24 80 868
Fax +39 011 - 22 74 406



ANEST IWATA Group