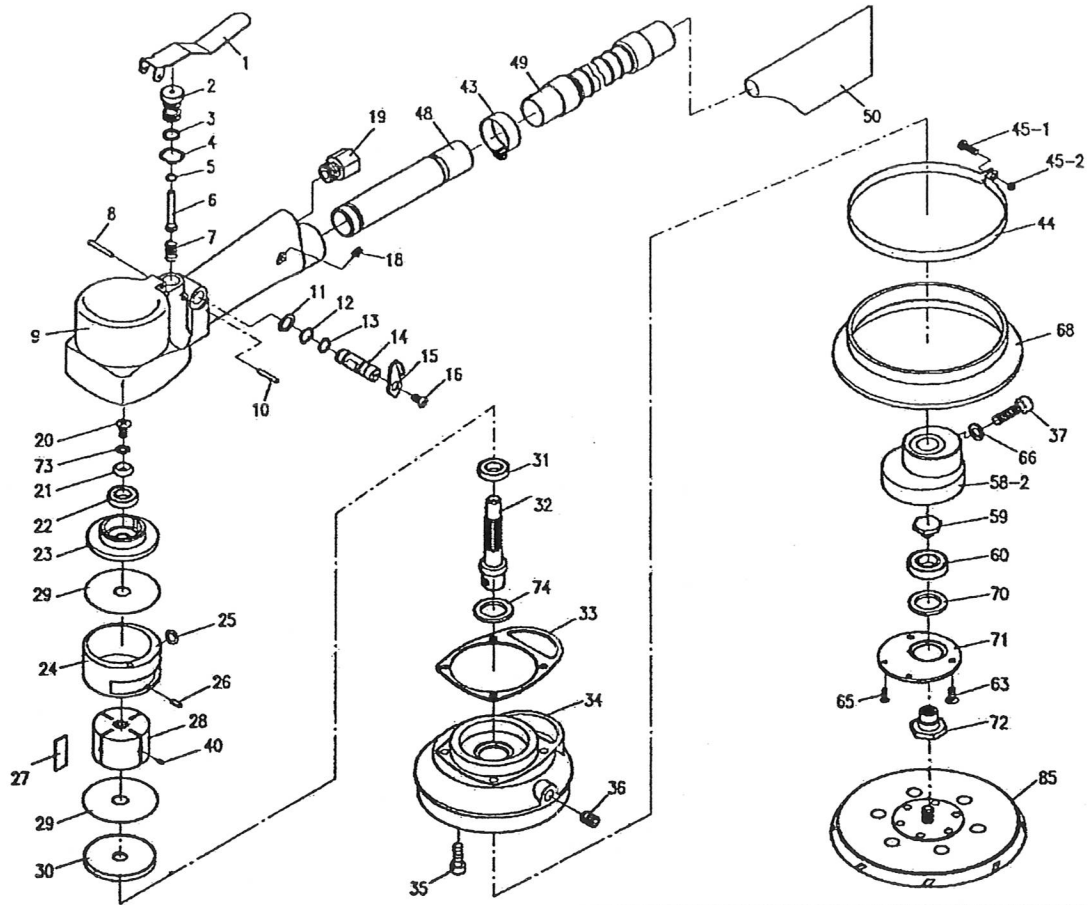


SANDER



Index No.	Description	Part No.	Q'ty	Index No.	Description	Part No.	Q'ty
1	Valve Lever	BFS233C203D08	1	31	Bearing(6201ZZ)	BFS233C002302	1
2	Valve Pin Sleeve	BFS233C203D09	1	32	Rotor Shaft	BFS233C203D10	1
3	O-Ring(P8)	BFS233C004102	2	33	Body Gasket	BFS233C203D02	1
4	Wave Washer(WW-12)	BFS233C001705	1	34	Base Ring	BFS233C203D03	1
5	O-Ring(ø4xø1.5)	BFS233C004107	1	35	Screw(M5x20)	BFS233C000106	4
6	Valve	BFS233C201N11	1	36	Plag(PT 1/8")	BFS233C000202	1
7	Valve Spring	BFS233C201N12	1	37	Cap Bolt(M6x25)	BFS233C000101	1
8	Spring Pin(ø3x20)	BFS233C003305	1	40	Vane Spring	BFS233C201N16	4
9	Body	BFS233C203D01	1	43	Hose Clamps( 1 1/2")	BFS233C0004202	1
10	Needle Pin(ø3x18)	BFS233C003401	1	44	Skirt Band Set	BFS233C203D05	1Set
11	Snap Ring(S-10)	BFS233C003002	2	45-1	Screw(M4x20)	BFS233C000303	1
12	Wave Washer(WW-10)	BFS233C001704	1	45-2	Nut(M4)	BFS233C001001	1
13	O-Ring(P6)	BFS233C004104	2	46	Skirt(5" Pad Only)	BFS233A203D04	1
14	Regulator	BFS233C203D07	1	48	Ejector	BFS233C203D13	1
15	Regulator Lever	BFS233C203D06	1	49	Dust Hose Set	BFS233A203D15	1 Set
16	Screw(M4x6)	BFS233C000501	1	50	Bag	BFS233C101D33	1
18	Set Bolt(M4x6)	BFS233C000203	1	58-2	Random Balancer(6")	BFS233202N30B	1
19	1/4" OM Nipple	BFS233C301N03	1	59	Retainer Bolt	BFS233C101D26	1
20	Screw(M6x10)	BFS233C000402	1	60	Bearing(62012RS)	BFS233C002301	1
21	Conical Washer(M6)	BFS233C101D10	1	63	Screw(M4x8)	BFS233C000404	2
22	Bearing(6200ZZ)	BFS233C002307	1	65	Screw(M3x8)	BFS233C000301	2
23	U-Bearing Case	BFS233C201N13	1	66	Spring Washer(M6)	BFS233C001804	1
24	Cylinder	BFS233C201N15	1	68	Skirt(6" Pad Only)	BFS233A206D04	1
25	O-Ring(P6)	BFS233C004104	1	70	Felt Ring	BFS233C212N23	1
26	Spring Pin(ø3x5)	BFS233C003301	1	71	Retaining Plat	BFS233C212N24	1
27	Vane	BFS233C201N17	4	72	Pad Retainer	BFS233C201N27	1
28	Rotor	BFS233C201N18	1	73	Lock Washer(CW6)	BFS233C001903	1
29	Side Plate	BFS233C201N19	2	74	Felt Ring	BFS233C201N23	1
30	L-Bearing Case	BFS233C201N20	1	85	6"x15Hole Hook Face Pad	BFS233C5650014	1

P.S. The standard Air Pressure is 90PSI(6.3kg/cm2)